

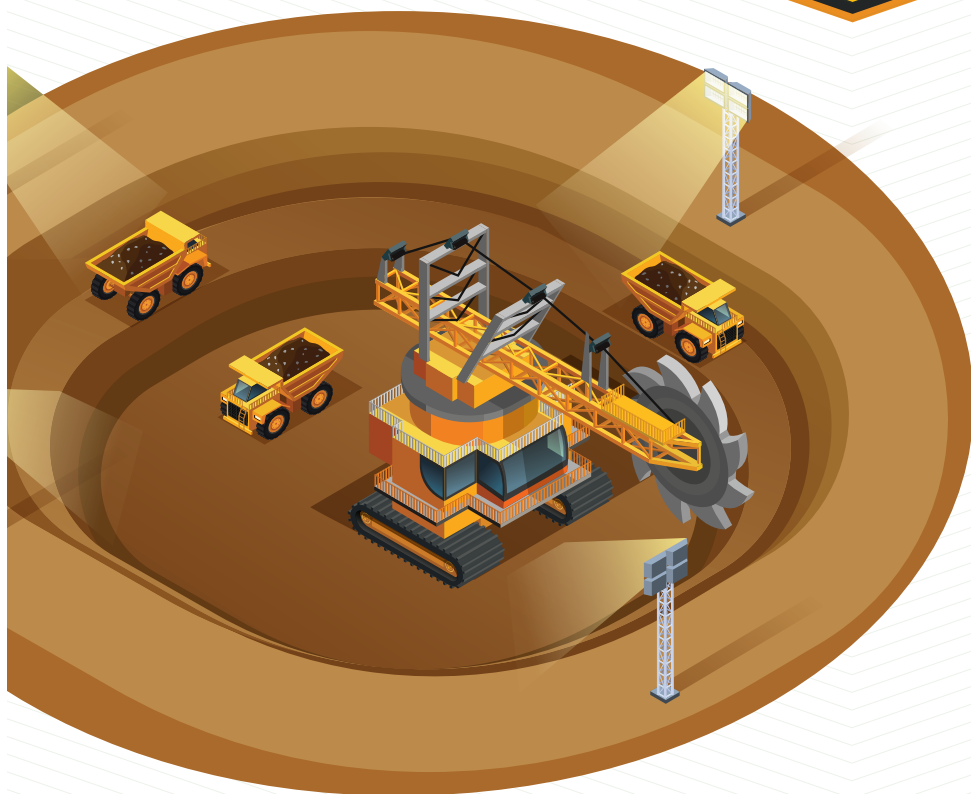
2

GOLDEN VALLEY PROJECT, LABERGE DISTRICT, QUEBEC

Location

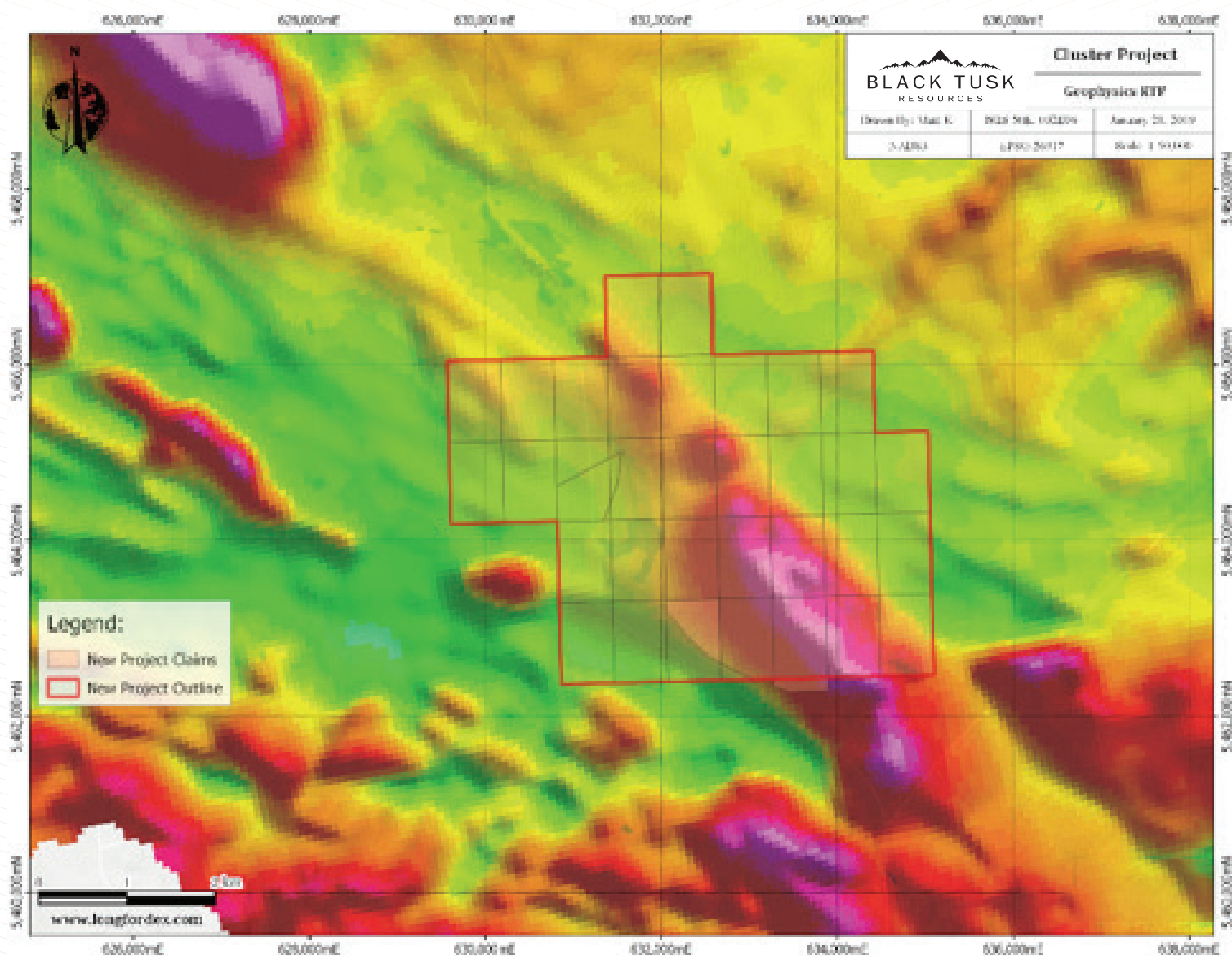
The Golden Valley Project consists of 37 claims totaling **1,850 hectares** located **170 kilometers northwest of the city of Val-d'Or, Quebec.**

The Golden Valley Project is situated within the Abitibi Greenstone belt, which is home to many significant mineral deposits.



The Leberge Deformation Zone, that is similar to the gold-bearing Casa-Berardi Fault structure, passes through the property.

GOLDEN VALLEY PROPERTY, QUEBEC

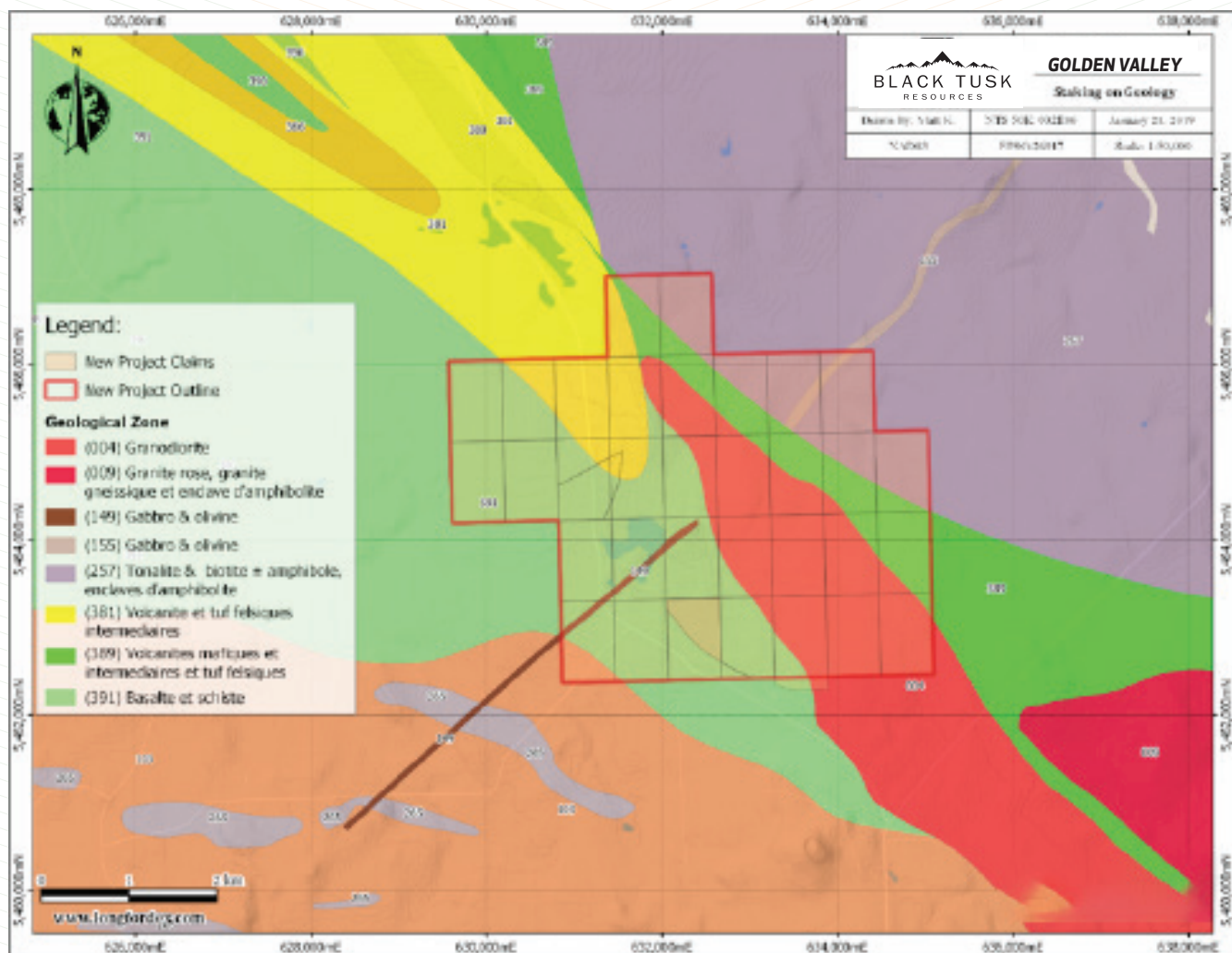


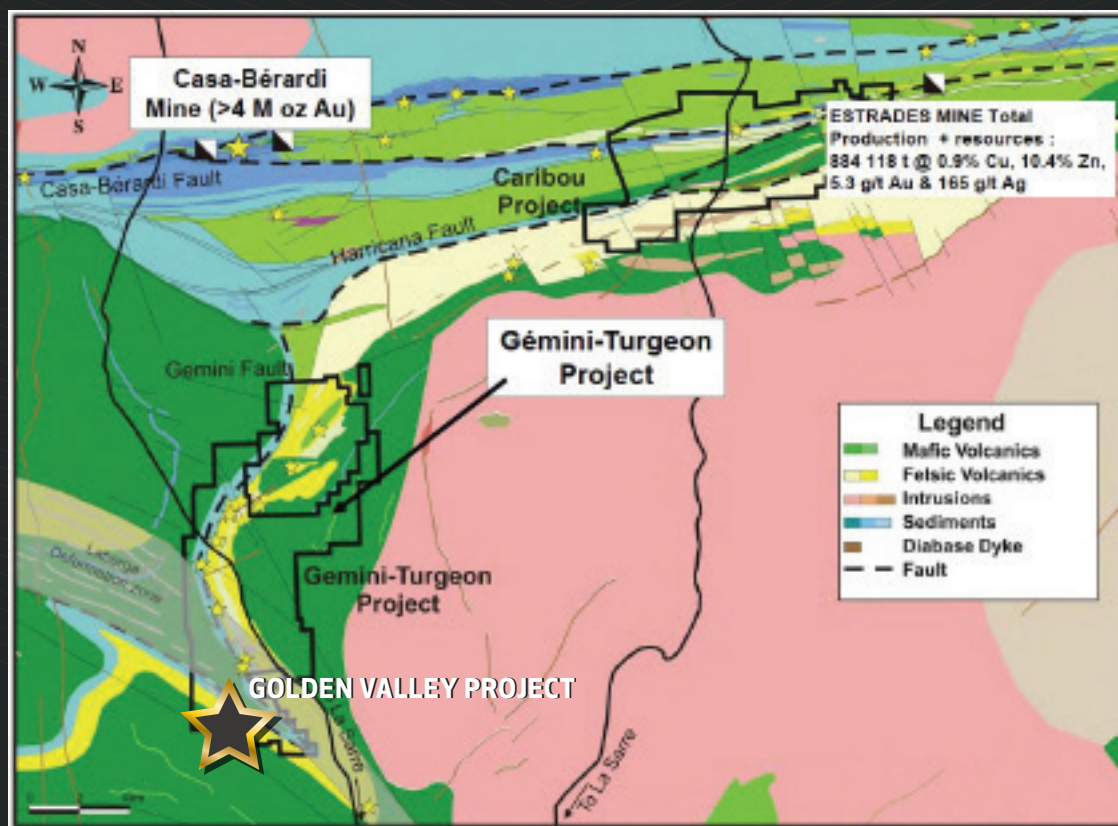
- 1601 Ha, 170km NW of Val-d'Or
- Contains the Laberge Paradis historic showing
- Drilled in 1987, 1996 and 2003
- Drillhole highlights include:

- 1.8 g/t over 4.5m @141m
- 1.5 g/t over 1m @122m
- 4.1 g/t over 0.5m @67m
- 1.4 g/t over 0.7m @151m
- 2.5 g/t over 0.9m

- Historic Drillholes are 350m from main road and accessible
- Contains multiple drill ready targets with historic mineralized zones that can be intersected through drilling without the need of a permit

Favourable geological setting situated on the fold nose in a sequence of volcanics (tuff and basaltic beds). The property is along strike from 14 other showings in the same sequence.





PROPERTIES TO THE NORTH OF THE GOLDEN VALLEY IN SIMILAR GEOLOGIC TERRAIN
(IMAGE FROM YORBEAU RESOURCES INC. WEBSITE)

HIGHLIGHTS THE GOLDEN VALLEY PROJECT

Black Tusk Resources has a series of assessments and academic reports to summarize previous work on the property, which included **airborne geophysics, geochemical and geological surveys, and diamond drilling**. Some of the more significant reported drill results include:

Drill hole LAB 87-B2 returned 1.82 grams per tonne (g/t) gold over 4.5 metres.

Drill hole LAB 109-03-01 returned 1.4 g/t over 0.7 m

Drill hole 34-96-02 returned 1.55 g/t gold over 1m

Drill hole 34-96-04 returned 4.10 g/t over 0.5 m



The historic drilling was undertaken in close proximity to main roads that are conveniently accessible for further work, including continued exploration of drill-ready targets.